

# Radiator Showroom

326 London Road Hilsea Portsmouth PO2 9JT

The Column range offers every possible choice of size, variation of steel multi column, a choice of 188 RAL colours and 33 special finishes

## How to order:

- All prices and outputs are given per section in the tables listed
  - Price per section includes plugs, bushes and diverter. Mounting options must be selected separately, these will include the air vent and appropriate number of wall ties.
  - Please specify your finish at time of order
- 1. Work out the required output for your room;** To find the output you require for each radiator first work out the heat output for your room. If you have a large room, divide this number by the total number of radiators you need in the room. e.g. a lounge 16' x 20' x 8' ceilings = a volume of 2560 x 6 = 15,360 BTUs. Two radiators would be required which = 7680 BTUs each. Your installer will also be able to help you decide this, if required. We also list the outputs in Watts.
  - 2. Choose the number of Columns**  
Column radiators are available in a choice of five column depths; 2, 3, 4, 5 and 6 columns. More columns equals greater depth, bigger water content and therefore a higher output, however choice is generally down to aesthetics.
  - 3. Choose a Height**  
All of the column depths are available in a range of 25 heights. Decide on a section height that matches the size you require, allowing an additional 100mm for cast feet or 97mm for welded feet.
  - 4. Calculate the number of sections you require**  
Listed next to each section height under 'BTUs/Watts' will be the output each section gives. Divide your required output by this number to find the total number of sections needed to match the output; e.g. if you have chosen a 3 column 602mm high then 7680 BTUs divided by 205 BTUs per section = 38 sections.
  - 5. Size the finished product & double check**  
Each section regardless of how many columns it has is 45mm wide, therefore a 38 section radiator will equal 38 x 45mm = 1710mm wide, plus 24mm bushes plus valves. If this is too wide then either increase the height of each section or choose a section with more columns.  
For example; 3 column 750mm high = 7680 BTUs divided by 252 BTUs per section = 31 sections = 1395mm wide.  
or 4 column 600mm high = 7680 BTUs divided by 270 BTUs per section = 29 sections = 1305mm wide.
  - 6. Choose the mounting option**  
Your Column radiators can be supplied in one of three mounting options; Welded Feet, Cast Feet or Wall Brackets.
    - With Wall brackets you have the freedom to position your Radiator at any height, we also offer stud wall brackets
    - Cast feet give the finished radiator a traditional look
    - Welded feet will give you a more contemporary feel
    - Select required option and add to section price.

**Note: Bare Metal Lacquer Column radiators are only available to be mounted with universal wall brackets or welded feet**

## Help & Advice;

Sizes can be achieved by combining column depth, height and number of sections to achieve desired output.

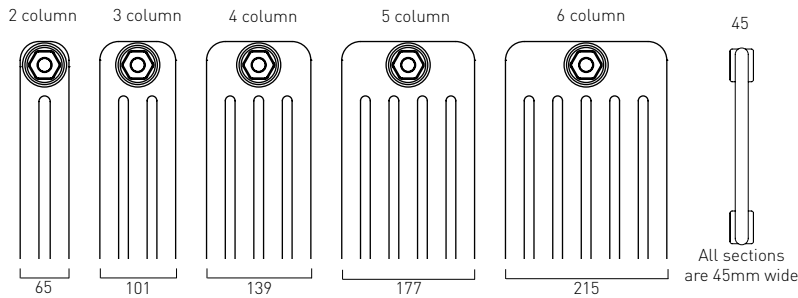
Column sections are 45mm wide, therefore the total radiator length is;

**"no. of Sections x 45mm + 24mm for bushes + valves"**

When considering the height of your radiator remember that your mounting option will affect the overall height of your radiator.

Column radiators are supplied factory assembled up to a maximum of 40 sections. For radiators outside these parameters please consult Customer Services to discuss your requirements. All Column's come supplied as a finished radiator with ½" B.O.E. (Bottom Opposite End) connections as standard.

# Column Range - priced by section



Pipe Centres for all Columns with Cast Feet, Welded Feet or Wall Brackets are;	
Pipe centres left to right = number of sections x 45mm plus 24mm (12mm each) for bushes plus valves.	
Pipe centres from wall (based on adjustable wall ties)	2 Column = 64mm to 74mm 3 Column = 82mm to 92mm 4 Column = 102mm to 112mm 5 Column = 120mm to 130mm 6 Column = 140mm to 150mm

## 2 Column - 65mm Deep

Height A (mm)	Width B (mm)	Watts Δt 50°C	Btu's Δt 50°C	White Inc VAT	Lacquer & Colours Inc VAT
195	45	14	48	£12.21	£15.26
300	45	23	78	£12.90	£16.12
350	45	26	89	£13.26	£16.57
365	45	27	92	£13.32	£16.65
400	45	30	102	£13.42	£16.78
450	45	33	113	£13.78	£17.23
500	45	36	123	£13.88	£17.36
550	45	39	133	£14.03	£17.54
565	45	40	136	£14.08	£17.60
600	45	43	147	£14.16	£17.70
650	45	46	157	£14.20	£17.75
665	45	47	160	£14.45	£18.07
685	45	48	164	£14.63	£18.29

Height A (mm)	Width B (mm)	Watts Δt 50°C	Btu's Δt 50°C	White Inc VAT	Lacquer & Colours Inc VAT
750	45	52	177	£14.71	£18.39
765	45	53	181	£15.74	£19.68
865	45	60	205	£16.43	£20.54
885	45	61	208	£16.53	£20.66
900	45	62	212	£16.69	£20.87
1000	45	69	235	£17.32	£21.64
1200	45	82	280	£20.23	£25.29
1500	45	103	351	£24.39	£30.48
1800	45	124	423	£29.51	£36.88
2000	45	139	474	£33.48	£41.86
2200	45	154	525	£36.66	£45.83
2500	45	177	604	£41.96	£52.45

## 3 Column - 101mm Deep

Height A (mm)	Width B (mm)	Watts Δt 50°C	Btu's Δt 50°C	White Inc VAT	Lacquer & Colours Inc VAT
195	45	20	68	£13.09	£25.18
300	45	32	109	£14.14	£27.19
350	45	37	126	£14.76	£28.39
365	45	38	130	£14.93	£28.70
400	45	42	143	£15.29	£29.40
450	45	46	157	£15.74	£30.28
500	45	51	174	£16.05	£30.87
550	45	55	188	£16.11	£30.99
565	45	57	194	£16.19	£31.13
600	45	60	205	£16.22	£31.19
650	45	65	222	£16.86	£32.42
665	45	66	225	£17.12	£32.93
685	45	68	232	£17.50	£33.65

Height A (mm)	Width B (mm)	Watts Δt 50°C	Btu's Δt 50°C	White Inc VAT	Lacquer & Colours Inc VAT
750	45	74	252	£17.62	£33.89
765	45	75	256	£19.34	£37.20
865	45	84	287	£19.44	£37.39
885	45	86	293	£19.70	£37.89
900	45	87	297	£19.87	£38.21
1000	45	96	328	£20.85	£40.10
1200	45	114	389	£26.68	£51.30
1500	45	141	481	£35.61	£68.49
1800	45	168	573	£38.62	£74.27
2000	45	187	638	£46.22	£88.88
2200	45	205	699	£52.31	£100.59
2500	45	233	795	£56.82	£109.28

# Column Range - priced by section

## 4 Column - 139mm Deep

Height A (mm)	Width B (mm)	Watts $\Delta t$ 50°C	Btu's $\Delta t$ 50°C	White Inc VAT	Lacquer & Colours Inc VAT
195	45	26	89	£14.66	£18.33
300	45	42	143	£16.00	£20.00
350	45	48	164	£16.43	£20.54
365	45	50	171	£16.69	£20.87
400	45	54	184	£16.79	£20.99
450	45	60	205	£17.48	£21.85
500	45	66	225	£18.04	£22.54
550	45	72	246	£18.72	£23.40
565	45	74	252	£19.08	£23.85
600	45	79	270	£19.58	£24.47
650	45	84	287	£19.80	£24.75
665	45	86	293	£19.85	£24.81
685	45	89	304	£20.02	£25.03

Height A (mm)	Width B (mm)	Watts $\Delta t$ 50°C	Btu's $\Delta t$ 50°C	White Inc VAT	Lacquer & Colours Inc VAT
750	45	96	328	£20.07	£25.09
765	45	98	334	£22.45	£28.07
865	45	110	375	£24.75	£30.93
885	45	112	382	£25.01	£31.26
900	45	114	389	£24.03	£30.03
1000	45	125	427	£25.99	£32.49
1200	45	148	505	£33.22	£41.53
1500	45	182	621	£44.09	£55.11
1800	45	216	737	£52.11	£65.14
2000	45	238	812	£57.94	£72.42
2200	45	260	887	£64.84	£81.05
2500	45	292	996	£72.80	£91.00

## 5 Column - 177mm Deep

Height A (mm)	Width B (mm)	Watts $\Delta t$ 50°C	Btu's $\Delta t$ 50°C	White Inc VAT	Lacquer & Colours Inc VAT
195	45	31	106	£18.04	£22.54
300	45	51	174	£19.51	£24.39
350	45	59	201	£20.33	£25.41
365	45	61	208	£20.69	£25.86
400	45	66	225	£20.85	£26.06
450	45	73	249	£21.47	£26.84
500	45	81	276	£22.09	£27.62
550	45	88	300	£22.62	£28.27
565	45	90	307	£22.78	£28.48
600	45	95	324	£23.40	£29.25
650	45	103	351	£24.22	£30.28
665	45	105	358	£24.45	£30.56
685	45	108	368	£25.27	£31.59

Height A (mm)	Width B (mm)	Watts $\Delta t$ 50°C	Btu's $\Delta t$ 50°C	White Inc VAT	Lacquer & Colours Inc VAT
750	45	117	399	£26.15	£32.69
765	45	119	406	£27.20	£34.00
865	45	133	454	£28.28	£35.35
885	45	136	464	£28.71	£35.88
900	45	138	471	£29.49	£36.86
1000	45	152	519	£31.36	£39.20
1200	45	180	614	£41.70	£52.13
1500	45	220	751	£57.05	£71.32
1800	45	261	891	£67.49	£84.37
2000	45	288	983	£74.92	£93.65
2200	45	314	1071	£82.78	£103.47
2500	45	354	1208	£93.38	£116.73

## 6 Column - 215mm Deep

Height A (mm)	Width B (mm)	Watts $\Delta t$ 50°C	Btu's $\Delta t$ 50°C	White Inc VAT	Lacquer & Colours Inc VAT
195	45	37	126	£20.95	£26.19
300	45	60	205	£21.83	£27.29
350	45	69	235	£22.78	£28.48
365	45	72	246	£23.34	£29.17
400	45	78	266	£23.60	£29.50
450	45	87	297	£24.22	£30.28
500	45	95	324	£24.75	£30.93
550	45	104	355	£26.22	£32.77
565	45	106	362	£26.58	£33.22
600	45	112	382	£28.08	£35.11
650	45	121	413	£29.23	£36.54
665	45	123	420	£29.59	£36.99
685	45	127	433	£30.21	£37.76

Height A (mm)	Width B (mm)	Watts $\Delta t$ 50°C	Btu's $\Delta t$ 50°C	White Inc VAT	Lacquer & Colours Inc VAT
750	45	137	467	£30.57	£38.21
765	45	140	478	£31.26	£39.07
865	45	156	532	£32.86	£41.08
885	45	160	546	£33.48	£41.86
900	45	162	553	£34.01	£42.51
1000	45	178	607	£36.76	£45.95
1200	45	211	720	£49.20	£61.50
1500	45	259	884	£67.76	£84.69
1800	45	306	1044	£80.13	£100.16
2000	45	337	1150	£86.41	£108.02
2200	45	369	1259	£99.73	£124.67
2500	45	416	1419	£113.88	£142.34

# Column Range Wall Mounting Options

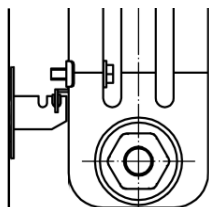
Once you have chosen your radiator size you can choose any one of our 4 mounting options & specify at time of order (fittings are available to order with a corresponding radiator only). Included in your radiator price you have a choice of two wall mounting options; standard wall brackets or stud wall brackets. The correct number of brackets and wall ties will be supplied with each order; prices for extra wall brackets and wall ties are available on request.

Please specify your preferred wall mounting option at time of order.  
Technical & pipe centre information of each mounting option is shown below / right.

Please note: Column radiators in a bare metal lacquer finish are only available to be mounted with universal wall brackets or welded feet.

## Standard wall brackets technical & pipe centre information

Can be positioned at any height (minimum height from floor 100mm); brackets are supplied with raw plugs.



Pipe centres from wall:

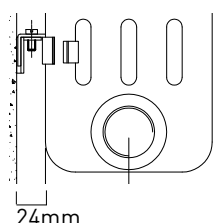
- 2 column = 64mm - 74mm
- 3 column = 82mm - 92mm
- 4 column = 102mm - 112mm
- 5 column = 120mm - 130mm
- 6 column = 140mm - 150mm



Wall tie; adjusts from 32 to 42mm

## Bare metal lacquer universal wall brackets (suitable for stud walls)

Note: Column's with lacquer wall brackets can be positioned at any height (minimum 100mm from floor)

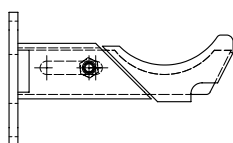


Pipe centres from wall:

- 2 column = 56mm
- 3 column = 74mm
- 4 column = 93mm
- 5 column = 112mm
- 6 column = 131mm

## Stud wall brackets technical & pipe centre information (supplied in pairs)

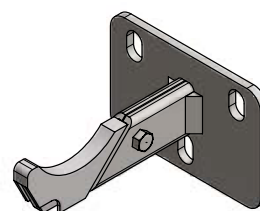
Note: stud wall brackets can be positioned at any height (minimum height from floor 100mm).



Pipe centres from wall:

- 2-3 column = 70mm - 80mm
- 4-5 column = 95mm - 130mm
- 6 column = 129mm - 148mm

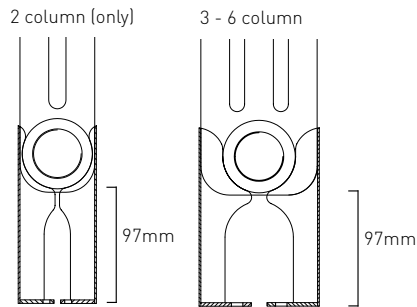
Please note: Stud wall brackets are not available for bare metal lacquer finishes



# Column Range Floor Mounting Options

## Column Kits for Welded Feet

Please remember to add 97mm to the height of the Column section you have chosen if you are using Welded Feet.



Sections	No. of Feet	White Inc VAT	Colour / Lacquer Inc VAT
Up to 20 sections	2	£62.40	£78.00
21-39 (odd number of sections)	3	£93.60	£117.00
22-50 (even number of sections)	4	£124.80	£156.00
41-49 (odd number of sections)	5	£156.00	£195.00

Column's with Welded Feet are supplied with the correct number of feet (see above); additional Welded Feet cannot be ordered.

### White & Colour Welded feet pipe centres

2 column = 64mm - 74mm  
 3 column = 82mm - 92mm  
 4 column = 102mm - 112mm  
 5 column = 120mm - 130mm  
 6 column = 140mm - 150mm

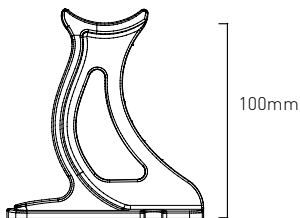
### Bare Metal Lacquer Welded feet pipe centres

2 column = 56mm  
 3 column = 74mm  
 4 column = 93mm  
 5 column = 112mm  
 6 column = 131mm

## Column Kits for Cast Feet

(not available for bare metal lacquer finishes)

Please remember to add 100mm to the height of the Column section you have chosen if you are using Cast Feet.



Section & Column Range	No. of Feet	White Inc VAT	Colour Inc VAT
2-20 Sections / 2-6 Columns	2	£31.20	£39.00
21-30 Sections / 2-6 Columns	3	£46.80	£58.50
31-40 Sections / 2-6 Columns	4	£62.40	£78.00
41-50 Sections / 2-6 Columns	5	£78.00	£97.50

### Pipe centres from wall:

2 column = 64mm - 74mm  
 3 column = 82mm - 92mm  
 4 column = 102mm - 112mm  
 5 column = 120mm - 130mm  
 6 column = 140mm - 150mm

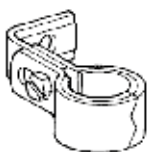
If you require additional cast feet please see pricing table below right and specify at time of order

Description	White Inc VAT	Colour Inc VAT
Cast feet (each)	£17.16	£22.62

## Optional extra wall ties for Column Radiators

(not available for bare metal lacquer finishes)

If you require additional wall ties please see pricing table below and specify at time of order



Wall tie; adjusts from 32 to 42mm

Description	White Inc VAT
Wall tie (pair)	£8.58